

MONTHLY MEMBERSHIP PROGRESS REPORT

District 26 M7

Results as of: 3/31/2026

GMT:

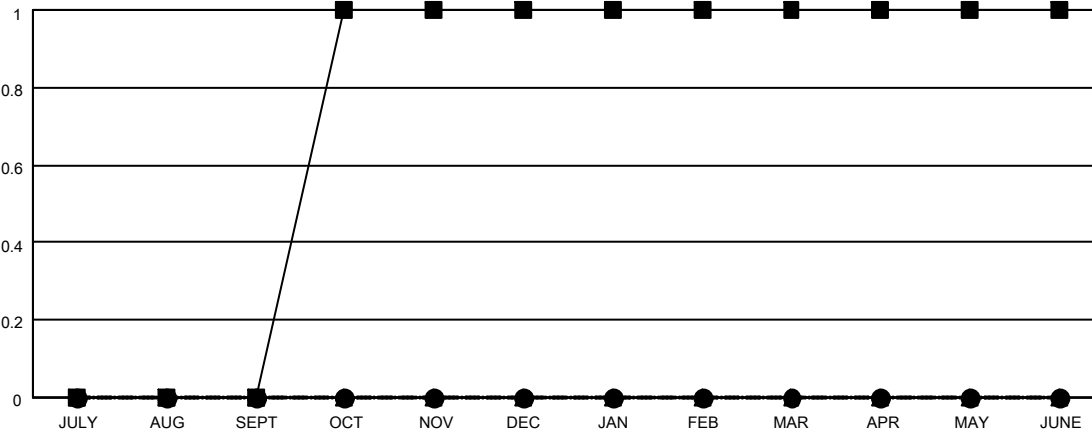
LOCATION MISSOURI

GMT CA

Clubs			
RESULTS FOR 2025-2026			
QUARTER	NEW CLUB GOAL	NEW CLUBS	DROPPED CLUBS
JULY/AUG/SEPT	0	0	0
OCT/NOV/DEC	1	0	0
JAN/FEB/MAR	0	0	1
APR/MAY/JUNE	0	0	0

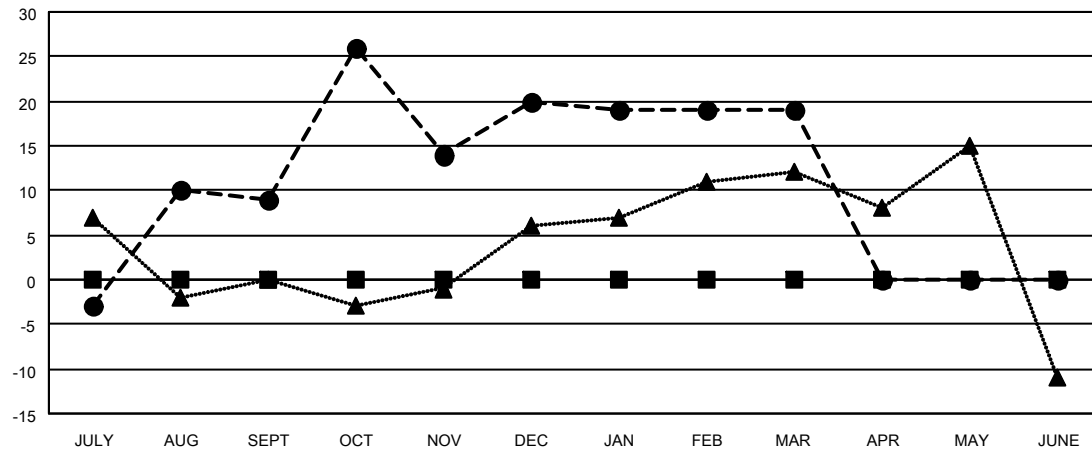
Members			
RESULTS FOR 2025-2026			
QUARTER	MEMBER GROWTH NET GOAL	MEMBER GROWTH ACTUAL	DROPPED MEMBERS ACTUAL (including transfers)
JULY/AUG/SEPT	0	51	21
OCT/NOV/DEC	0	68	46
JAN/FEB/MAR	0	34	31
APR/MAY/JUNE	0	0	0

GOALS AND ACTUAL NEW CLUBS CUMULATIVE



- - CURRENT YEAR GOALS FOR NEW CLUBS
- - CURRENT YEAR ACTUAL NEW CLUBS
- ▲ - LAST YEAR ACTUAL NEW CLUBS

GOALS AND ACTUAL MEMBERS CUMULATIVE



- - MEMBER GROWTH NET GOAL
- - MEMBER GROWTH ACTUAL
- ▲ - LAST YEAR MEMBERSHIP ACTUAL

DROPPED CLUBS: 1	21 CLUBS OF 30 ADDED 1 OR MORE NEW MEMBERS	GENDER DISTRIBUTION
		MALE 923 (79.57%)
		FEMALE 237 (20.43%)
DROPPED MEMBERS	CLICK HERE FOR CUMULATIVE MEMBERSHIP DATA	TOTAL FAMILY UNIT MEMBERS 204
DECEASED 10		FAMILY MEMBERS PAYING HALF DUES 104
CLUB CANCELLED 9		
OTHER 79		
TOTAL 98		